

5-megapixel iA H.265 Network Camera

Panasonic WV-S2550L captures the highest quality images in even very challenging and dynamic environments. Intelligent Auto (iA) monitors scene dynamics and motion to adjust key camera settings automatically in real-time reducing distortion such as motion blur on moving objects. Adopting H.265 Smart Coding technology, bandwidth efficiency is intelligently increased for longer recording and less storage. Out of the box, the camera supports full data encryption streaming and is compliant to FIPS 140-2 Level 1 standards to keep your video secured.

Extreme image quality allows evidence to be captured even under challenging conditions

- Auto Shutter speed control for moving vehicles
- Sharp and clear images of a walking person day & night
- Outstanding low light performance in true color with low noise for night time applications
- Super Dynamic 120dB for backlit situations involving headlights and shadows on night streets
- Environmental durability : IP66, IK10, 50J compliant

Extreme bandwidth compression with new Panasonic H.265 Smart Coding

- Longer recording and less storage compared to any H.264 based compression techniques
- New self-learning ROI* encoding (Auto VIQS) detects movement within the image and compresses the areas with little motion in order to reduce transmitted data while maintaining the quality of the image.

*Region of Interest

Extreme Data Security

- Full encryption SD card edge recording to keep your data safe
- FIPS 140-2 Level 1 compliant
- Full end-to-end system encryption with supported VMS and devices to protect from IP snooping/spoofing and detect data alteration

Key Features

- 5-megapixel images up to 30fps
- iA (intelligent Auto)
- Super Dynamic 120dB
- Color night vision (0.0044 to 0.07 lx)
- H.265 Smart Coding
- FIPS 140-2 Level 1 compliant
- Fiber Optic Media Converter Unit (Optional WV-S25F1)

Industry examples

- Safe City
- Transportation (Airport / Train, Subway station)
- Bank (ATM, Entrance)
- Retail / Logistics / Education / Hospital / Building



with Base Bracket

Specifications

Camera	Image Sensor	1/2.8 type CMOS image sensor
	Effective Pixels	Approx. 5.1 megapixels
	Minimum Illumination	Color : 0.07 lx, BW : 0.04 lx (F1.3, Maximum shutter : Off (1/30s), AGC : 11) BW : 0 lx (F1.3, Maximum shutter : Off (1/30 s), AGC : 11, when the IR LED is lit) Color : 0.0044 lx, BW : 0.003 lx (F1.3, Maximum shutter : max. 16/30s, AGC : 11) *1
	White Balance	AWC (2,000 - 10,000 K), ATW1 (2,700 - 6,000 K), ATW2 (2,000 - 6,000 K)
	Shutter Speed	1/30 Fix to 1/10000 Fix
	Intelligent Auto	On / Off
	Super Dynamic	On / Off, the level can be set in the range of 0 to 31.
	Dynamic Range	Max 120 dB (Super Dynamic: On, Level: 30 or more, 15 fps) *2
	Adaptive Black Stretch	The level can be set in the range of 0 to 255.
	Back light compensation / High light compensation	BLC (Back light compensation) / HLC (High light compensation) / Off The level can be set in the range of 0 to 31. (only when Super dynamic / Intelligent Auto : Off)
	Fog compensation	On / Off, The level can be set in the range of 0 to 8 (only when intelligent auto / auto contrast adjust : Off)
	Maximum gain	The level can be set in the range of 0 to 11.
	Color/BW (ICR)	Off / On (IR Light Off) / On (IR Light On) / Auto1 (IR Light Off) / Auto2 (IR Light On) / Auto3 (SCC)
	IR LED Light	High / Middle / Low / Off, Maximum irradiation distance : 40 m (Approx. 131 ft)
	Digital Noise Reduction	The level can be set in the range of 0 to 255.
	Video Motion Detection (VMD)	On / Off, 4 areas available
	Intelligent VMD (i-VMD)	Type 6 *optional plug-in software WV-SAE200
	Privacy Zone	On / Off (up to 8 zones available)
Image rotation*3	0 °(Off) / 90 ° / 180 ° / 270 °, 90° and 270° are valid only in the 16: 9 mode.	
Camera Title (OSD)	On / Off Up to 20 characters (alphanumeric characters, marks)	
Lens	Zoom Ratio	3.1x Optical (Motorized zoom / Motorized focus)
	Digital (electronic) zoom	Choose from 3 levels of x1, x2, x4
	Focal length	2.9 - 9 mm {1/8 inches - 11/32 inches}
	Maximum Aperture Ratio	1 : 1.3 (WIDE) - 1 : 2.5 (TELE)
	Focus range	0.3 m (11-13/16 inches) - ∞
	Angular Field of View	[16 : 9 mode] Horizontal : 33° (TELE) - 103° (WIDE) Vertical : 19° (TELE) - 55° (WIDE) [4 : 3 mode] Horizontal : 33° (TELE) - 103° (WIDE) Vertical : 25° (TELE) - 75° (WIDE)
Adjusting Angle	Horizontal (PAN) angle : ±180°, Vertical (TILT) angle : -30 to +85°, Azimuth (YAW) angle : ±100°	
	Brightness, AUX On / Off	
Browser GUI	Camera Control	
	Audio	Mic (Line) Input : On / Off Volume adjustment : Low / Middle / High Audio Output : On / Off Volume adjustment : Low / Middle / High
	GUI / Setup Menu Language	English, Italian, French, German, Spanish, Portuguese, Russian, Chinese, Japanese
Network	Network IF	10Base-T / 100Base-TX, RJ45 connector
	Resolution	•16 : 9 mode 3072 x 1728 ⁴ / 2560 x 1440 / 1920 x 1080 / 1280 x 720 / 640 x 360 / 320 x 180 •4 : 3 mode 3072 x 2304 ⁴ / 2560 x 1920 / 1280 x 960 / 800 x 600 / VGA / 400 x 300 / QVGA
	H.265/ H.264 JPEG (MJPEG)	Constant bit rate / VBR / Frame rate / Best effort
	H.265/ H.264 ⁵ JPEG	Image Quality 10 steps
	Smart Coding	GOP (Group of pictures) control : On (Frame rate control) / On (Advanced) / On (Mid) / On (Low) / Off *On (Frame rate control) and On (Advanced) are only available with H.265. Auto VIQS : On / Off

*1 Converted value
*2 The frame rate is limited to 15 fps for level 30 or higher. The dynamic range is 108 dB tv / 30 fps for level 29 or lower.
*3 Following the setting angle of the rotated image, the analog output of the MONITOR OUT terminal rotates.
*4 Used by super resolution techniques
*5 Transmission for 4 streams can be individually set.
*6 When recording audio on an SD memory card, only use AAC-LC (Advanced Audio Coding - Low Complexity).
*7 In the environment where IR-LED is always turned on, make sure that the temperature is between -40° C and +50 °C (-40 °F to +122 °F).

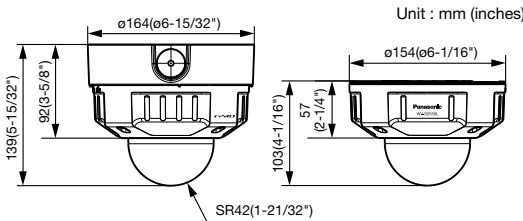
Network	Audio Compression	G.726 (ADPCM) : 16 kbps / 32 kbps G.711 : 64 kbps AAC-LC*6 : 64 kbps / 96 kbps / 128 kbps	
	Audio transmission mode	Off / Mic (Line) input / Audio output / Interactive (Half duplex) / Interactive (Full duplex)	
	Supported Protocol	IPv6 : TCP/IP, UDP/IP, HTTP, HTTPS, RTP, FTP, SMTP, DNS, NTP, SNMP, DHCPv6, MLD, ICMP, ARP, IEEE 802.1X, DiffServ IPv4 : TCP/IP, UDP/IP, HTTP, HTTPS, RTSP, RTP, RTP/RTCP, FTP, SMTP, DHCP, DNS, DDNS, NTP, SNMP, UPnP, IGMP, ICMP, ARP, IEEE 802.1X, DiffServ	
	No. of Simultaneous Users	Up to 14 users (Depends on network conditions)	
	SDXC/SDHC/SD Memory Card	H.265 / H.264 recording : Manual REC / Alarm REC (Pre/Post) / Schedule REC / Backup upon network failure JPEG recording : Manual REC / Alarm REC (Pre/Post) / Backup upon network failure Compatible SDXC/SDHC/SD Memory Card : Panasonic 2 GB, 4 GB*, 8 GB*, 16 GB*, 32 GB*, 64 GB**, 128 GB**, 256 GB**model *SDHC card, ** SDXC card (except miniSD card and microSD card)	
	Mobile Terminal Compatibility	iPad, iPhone, Android™ mobile terminals	
	Alarm	Alarm Source	3 terminals input, VMD alarm, Command alarm
		Alarm Actions	SDXC/SDHC/SD memory recording, E-mail notification, HTTP alarm notification, Indication on browser, FTP image transfer, Panasonic alarm protocol output
	Input/ Output	Monitor Output (for adjustment)	VBS : 1.0 V [p-p] / 75 Ω, composite, ø3.5 mm mini jack An NTSC or PAL signal can be outputted from camera
		Audio input	For microphone input : Recommended applicable microphone : Plug-in power type (Sensitivity of microphone : -48 dB±3 dB (0 dB-1 V/Pa, 1 kHz)) Input impedance : Approx. 2 kΩ (unbalanced) Supply voltage : 2.5 V ±0.5 V For line input : Input level: Approx. -10 dBV
Audio Output		ø3.5 mm stereo mini jack (monaural output) Output impedance : Approx. 600 Ω (unbalanced) Output level : -20 dBV	
General	External I/O Terminals	ALARM IN 1 (Alarm input 1/ Black & white input/ Auto time adjustment input) (x1) ALARM IN 2 (Alarm input 2/ ALARM OUT) (x1), ALARM IN 3 (Alarm input 3/ AUX OUT) (x1) UL (UL60950-1), c-UL (CSA C22.2 No.60950-1), CE, IEC60950-1	
	Safety	FCC (Part 15 ClassA), ICES003 ClassA, EN55032 ClassB, EN55024	
	EMC	DC power supply : DC12 V 840 mA/ Approx. 10.2 W PoE (IEEE802.3af compliant) Device : DC48 V 220 mA/ Approx. 10.6 W (Class 0 device)	
	Power Source and Power Consumption	-40 °C to +60 °C (-40 °F to 140 °F) ⁷ (Power On range : -30 °C to +60 °C (-22 °F to 140 °F))	
	Ambient Operating Temperature	10 to 100 % (no condensation)	
	Ambient Operating Humidity	IP66 (IEC60529), Type 4X(UL50), NEMA 4X compliant	
	Water and Dust Resistance	50J (IEC 60068-2-75 compliant), IK10 (IEC 62262)	
	Shock Resistance	When using base bracket : ø164 mm x 139 mm (H) (ø6-15/32 inches x 5-15/32 inches (H)) Dome radius 42 mm (1-21/32 inches) When using attachment plate only : ø154 mm x 103 mm (H) (ø6-1/16 inches x 4-1/16 inches (H)) Dome radius 42 mm (1-21/32 inches)	
	Dimensions	When using base bracket : Approx. 1.6 kg (3.53 lbs) When using attachment plate only : Approx. 1.2 kg (2.65 lbs)	
	Mass	Main body : Aluminum die cast, Light gray Outer fixing screws : Stainless steel (Corrosion-resistant treatment) Dome cover : Polycarbonate resin, Clear	
Finish			

Optional Software

Plug-in Software for i-VMD WV-SAE200

i-VMD is possible to detect objects in the specified area by advanced video analysis technology.
i-VMD : Intruder Detection, Loitering Detection, Direction Detection, Scene Change Detection, Object Detection, Cross Line Detection

Appearance



*The numeric value may be changed.

Trademarks and registered trademarks

- iPad and iPhone are trademarks of Apple Inc., registered in the U.S. and other countries.
- Android is a trademark of Google LLC.
- ONVIF and the ONVIF logo are trademarks or registered trademarks of Onvif Inc.
- All other trademarks identified herein are the property of their respective owners.

Important

- Safety Precaution : Carefully read the Important Information, Installation Guide and operating instructions before using this product.
- Panasonic cannot be responsible for the performance of the network and/or other manufacturers' products used on the network.

- Masses and dimensions are approximate.
- Specifications are subject to change without notice.

Optional Accessories

Fiber Optic Media Converter Unit

Extension Unit WV-S25F1 (Light gray)	Fiber Optic Media Converter Unit supports long distance optical networks by converting copper RJ45 to fiber.	• Basic specifications	• Support specifications for SFP module
		Power source : 24 V AC(50 Hz/60 Hz) Ambient Operating Temperature : -40 °C to +60 °C (-40 °F to 140 °F) (Power On range : -30 to +60 °F (-22 to 140 °F)) Ambient Operating Humidity : 10 % to 100 % (no condensation) Waterproof : IP66(IEC60529) Shock resistance : IK10(IEC62262)	SFP Port Type : LC type Ethernet Speed : 100/1000 Mbps Supply voltage, current : 3.3 V typical, Max. 300 mA SFP Cage : Standard mini-SFP cage (For 6.5 mm pitch SFP)
		*Refer to website for compatible SFP modules. https://security.panasonic.com/support/info/ <Control No. : C0504> *Different Color Model WV-X55F1 (Fine silver)	

Mount Bracket / Dome Cover / Other

Ceiling Mount Bracket (Embedded) WV-Q169A	Dome Cover (Smoke type) WV-CW7S WV-CW7SN (Smoke type with ClearSight coating)	Dome Cover (Clear type with ClearSight coating) WV-CW7CN	Wall Mount Bracket WV-Q185 (Light gray) Different Color Model WV-Q122A (Fine silver) (This bracket requires WV-Q186 or WV-Q124.)	Mount Bracket WV-Q186 (Light gray) Different Color Model WV-Q124 (Fine silver) (This bracket requires WV-Q185 or WV-Q121B.)
Sun Shade WV-Q7118	Ceiling Mount Bracket WV-Q105A	Ceiling Mount Bracket WV-Q121B (This bracket requires WV-Q186 or WV-Q124.)	Pole Mount Bracket WV-Q182 (Light gray) Different Color Model WV-Q188 (Fine silver) (This bracket requires WV-Q185 or WV-Q122A.)	Corner Mount Bracket WV-Q183 (Light gray) Different Color Model WV-Q189 (Fine silver) (This bracket requires WV-Q185 or WV-Q122A.)

- The brackets are available in two colors, Light gray and Fine silver. It is possible to use them in the different color combination.

DISTRIBUTED BY :

Panasonic



<https://security.panasonic.com>
<http://www.facebook.com/PanasonicNetworkCamera>

(2A-209CA)